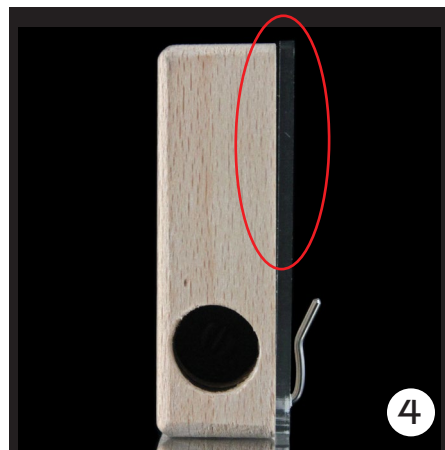
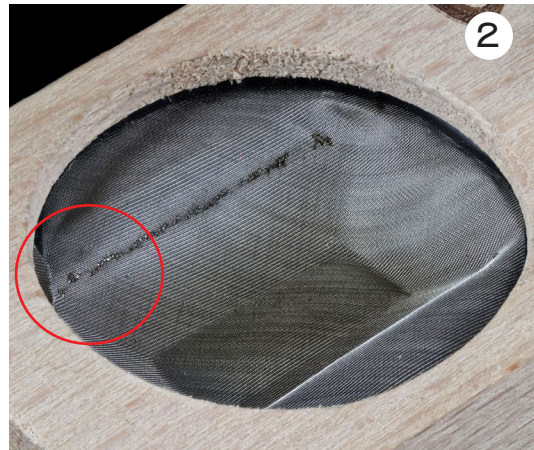
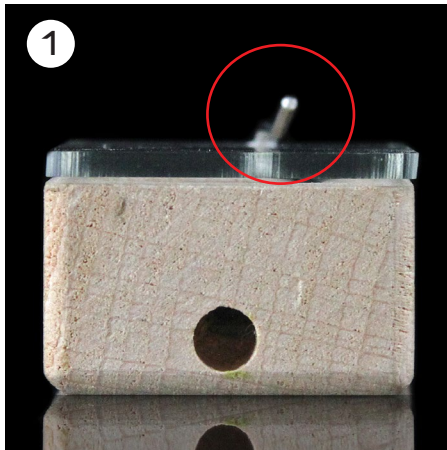


ELIPS

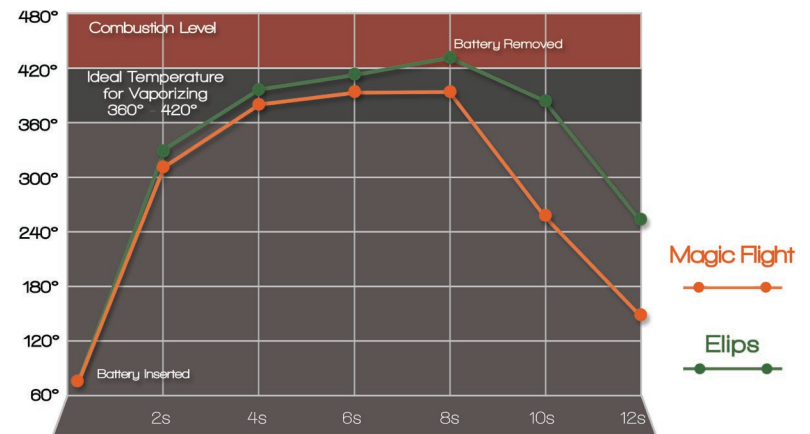
ELIPS We haven't been able to uncover where this counterfeit is made, but it shares a lot of notable features with the Da Kube (the font, the charger, the square tin, the screen shape). Elips has the same construction issues as most of the counterfeit.



- 1 Bent pin easily gets caught on clothes and doesn't effectively keep lid shut.
- 2 Oversized screen is badly adhered to heat conduction rods.
- 3 The full Elips Kit.
- 4 Lifted lid allows for vapor to escape. Not stealthy.

- **Easily identified and branded as Elips:** In person, the unit is easily identified as "Elips." The logo is easy to spot on the top of the counterfeit and tin, but online listings can mislead with their use of "Launch Box" in the description.
- **Safety Concerns:** A "Made In China" sticker is present on the bottom of the tin. Based on the smell, quality, texture, and unknown manufacturing procedures, we warn against inhaling vapor from this counterfeit.
- **Construction Issues:** Debris is found throughout unit due to rough construction, and parts are ill-fitting. The lid is lifted from unit, allowing vapor to escape which in use.
- **No click-lock and loose lid:** The counterfeiter's lid easily slides open and does not have a click-lock to stay secure during travel. Pin used to hold lid to unit easily catches on clothes.
- **Crooked, badly formed screen:** The disheveled screen is too large for the unit and hangs over black O-ring.
- **Temperature Issues:** This unit burned hotter than the other knock-offs tested, rising to combustion-level heating of herbs.

TEMPERATURE TRIALS



<http://www.magic-flight.com/counterfeit-page.php>